

AVAILABLE 2025

COMMERCIAL FOR LEASE

68 Water Street

6,057 SQ. FT. AVAILABLE

Summerside, PEI



CBRE

Property Overview

LOCATION

68 Water Street

PROPERTY TYPE

Mixed use residential with ground floor commercial space

SPACE

6,057 sq. ft.

RENT RATE

Starting at \$30/SF Net

AVAILABLE

Early 2025



Prime commercial space



High ceilings, large windows & exceptional natural light



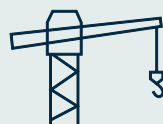
High vehicular & pedestrian traffic



Ideal for cafes, cocktail bars, retail and services



Frontage on Water Street



New construction in high demand area

Location

In the heart of Summerside, Prince Edward Island

Ideally located on Water Street in the ever-popular Summerside of PEI, this new prime multi-use development sits connected to the Summerside Downtown Boardwalk and near high traffic businesses like ADL, Holland College, and PEI Liquor. With employers, students, and customers abound, 68 Water Street is the perfect location for your office or retail space

The City of Summerside is located in Prince County, Prince Edward Island, Canada with the mindset of promoting and advancing its small city with big opportunities. Summerside offers a diverse market and skilled workforce and is a leader in sectors such as green energy, sport tourism and rapid economic growth.

“Located in a small city with big opportunities.”



45

Median Age

\$93,095

Avg household income (2024)

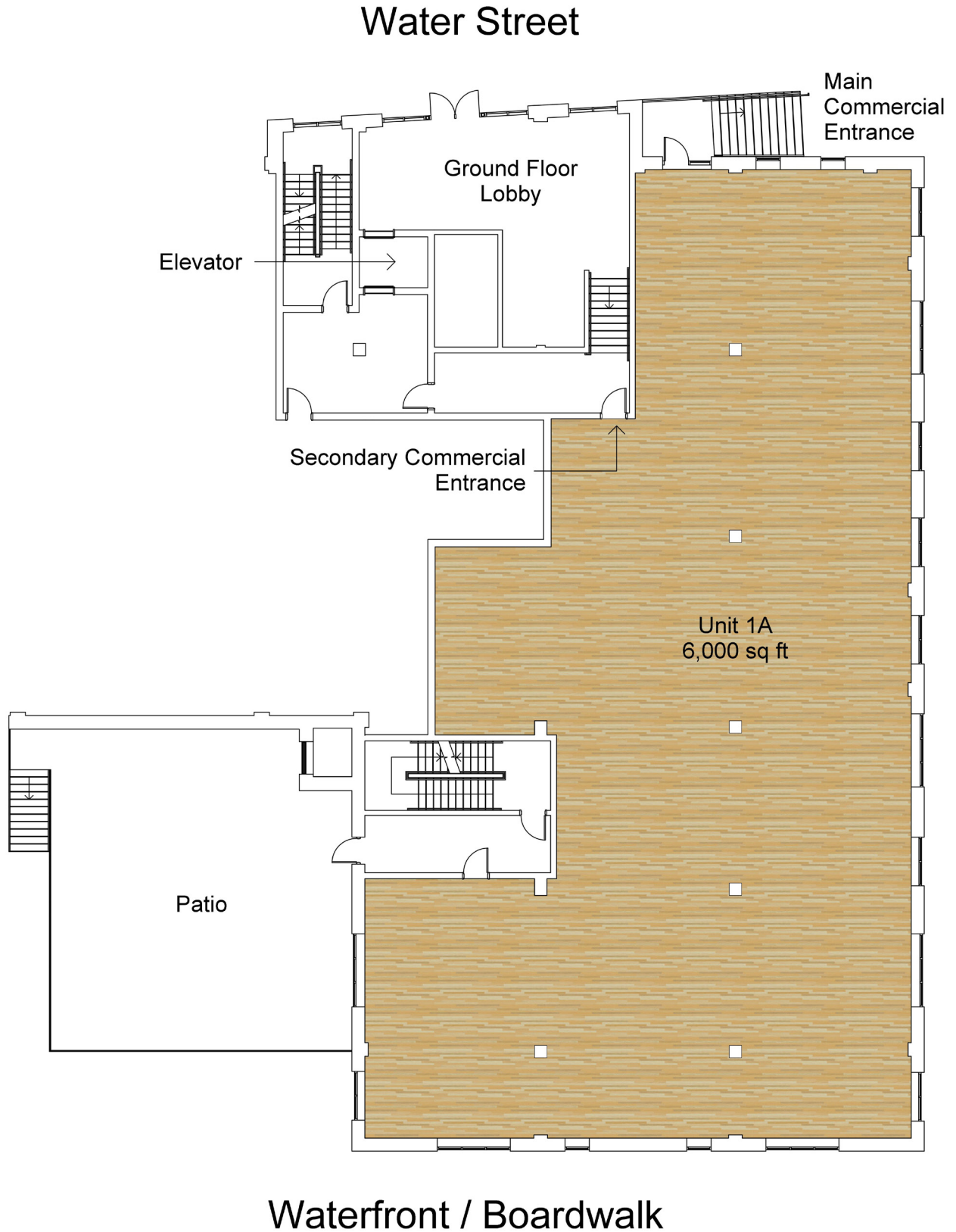
12.4%

Population Growth (2019 - 2024)

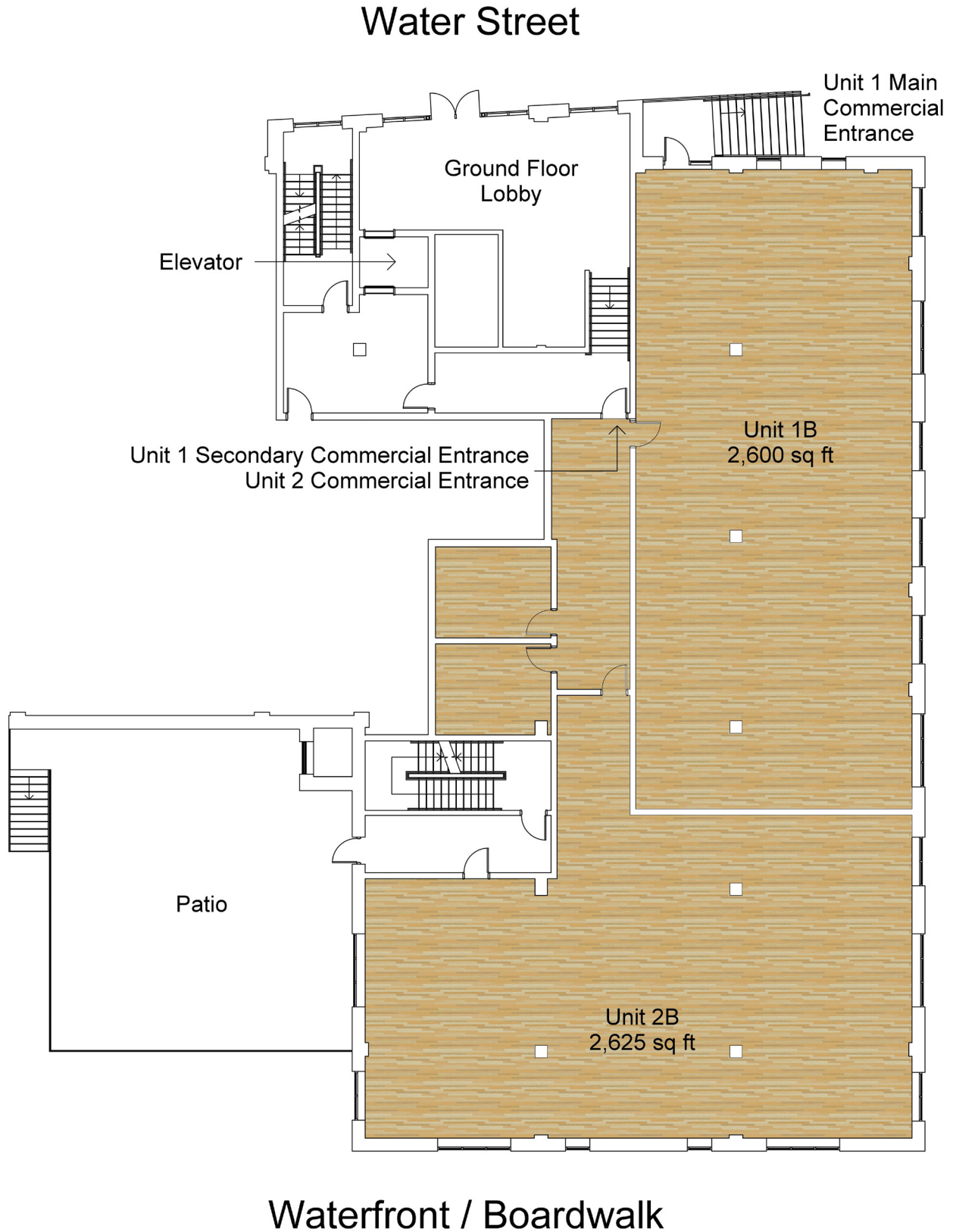
13,250

2024 Population (3km)

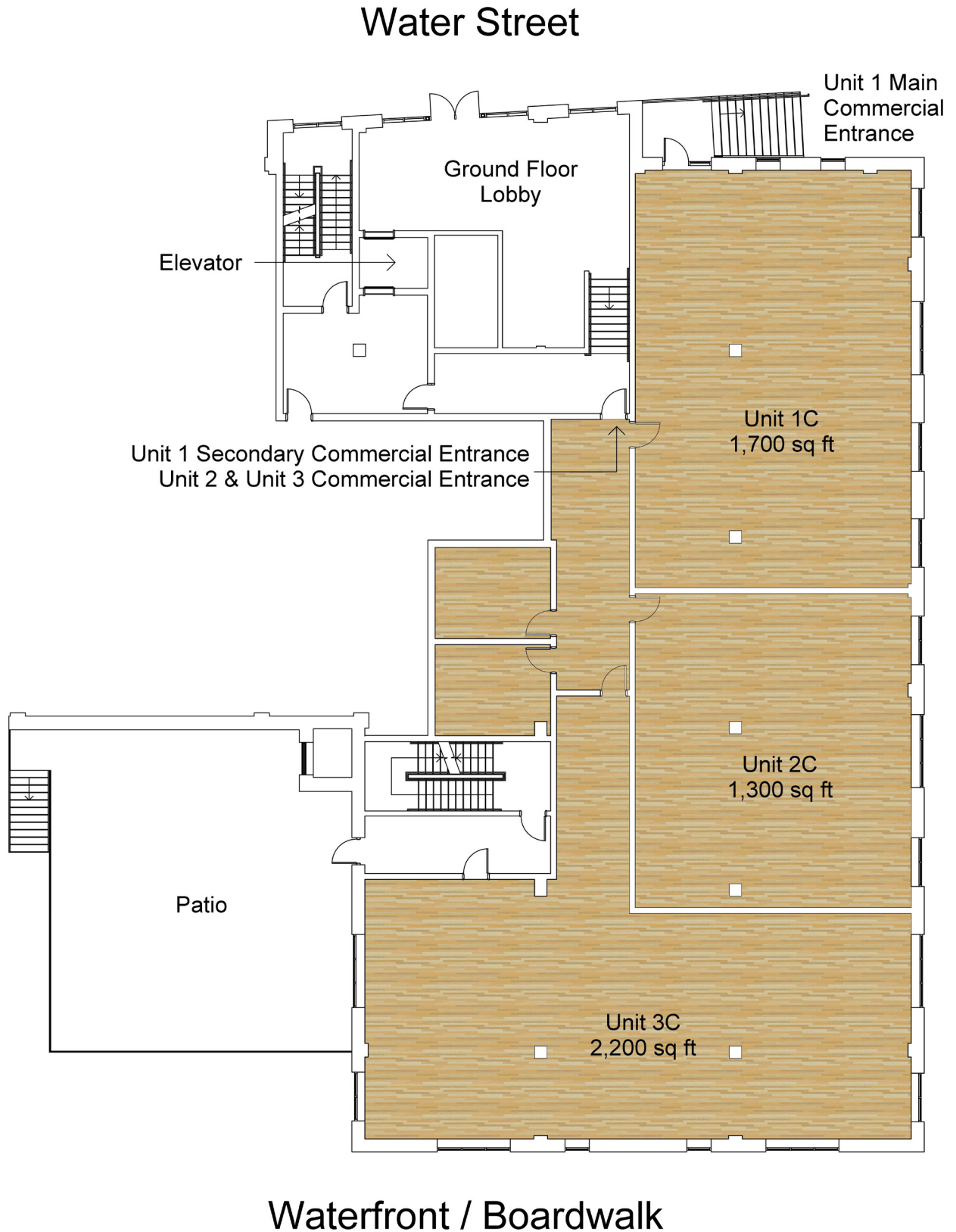
Floor Plan Option #1

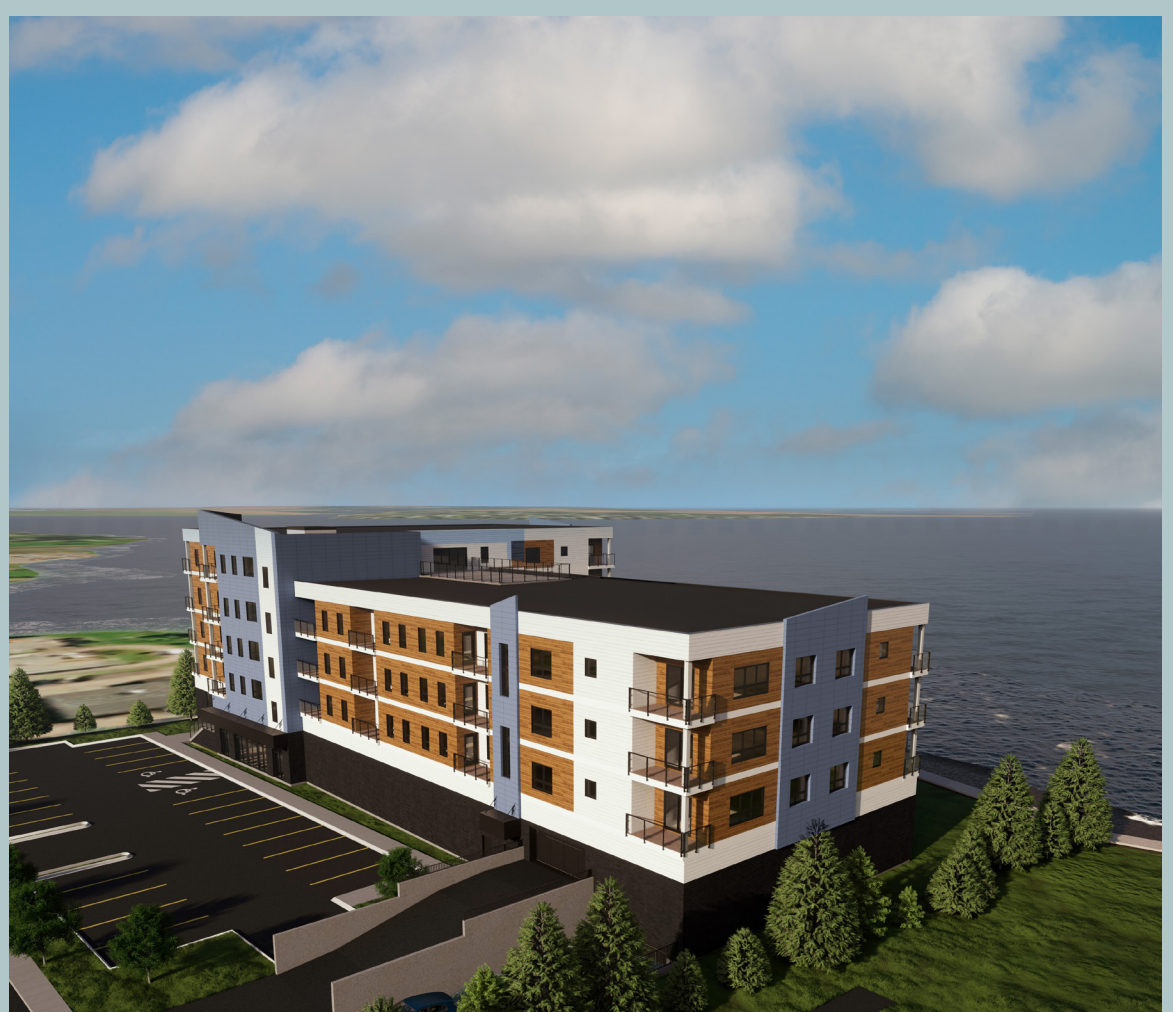


Floor Plan Option #2



Floor Plan Option #3





68 Water Street

For more information, please contact:

Scott McEwen
Senior Vice President
902 628 9301
scott.mcewen@cbre.com

This disclaimer shall apply to CBRE Limited, Real Estate Brokerage, and to all other divisions of the Corporation; to include all employees and independent contractors ("CBRE"). All references to CBRE Limited herein shall be deemed to include CBRE, Inc. The information set out herein, including, without limitation, any projections, images, opinions, assumptions and estimates obtained from third parties (the "Information") has not been verified by CBRE, and CBRE does not represent, warrant or guarantee the accuracy, correctness and completeness of the Information. CBRE does not accept or assume any responsibility or liability, direct or consequential, for the Information or the recipient's reliance upon the Information. The recipient of the Information should take such steps as the recipient may deem necessary to verify the Information prior to placing any reliance upon the Information. The Information may change and any property described in the Information may be withdrawn from the market at any time without notice or obligation to the recipient from CBRE. CBRE and the CBRE logo are the service marks of CBRE Limited and/or its affiliated or related companies in other countries. All other marks displayed on this document are the property of their respective owners. All Rights Reserved.